

Healthcare Science Career of the Week



Reconstructive Science

Area of HCS: Clinical Engineering & Medical Physics

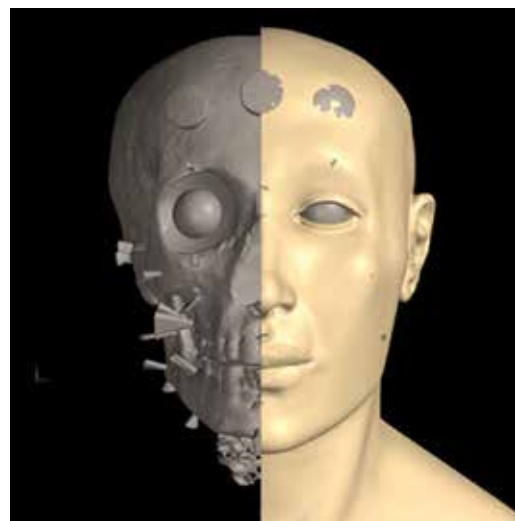
Pay Scale: Band 4 to Band 7: £18,000-£40,000

AMAZING FACT

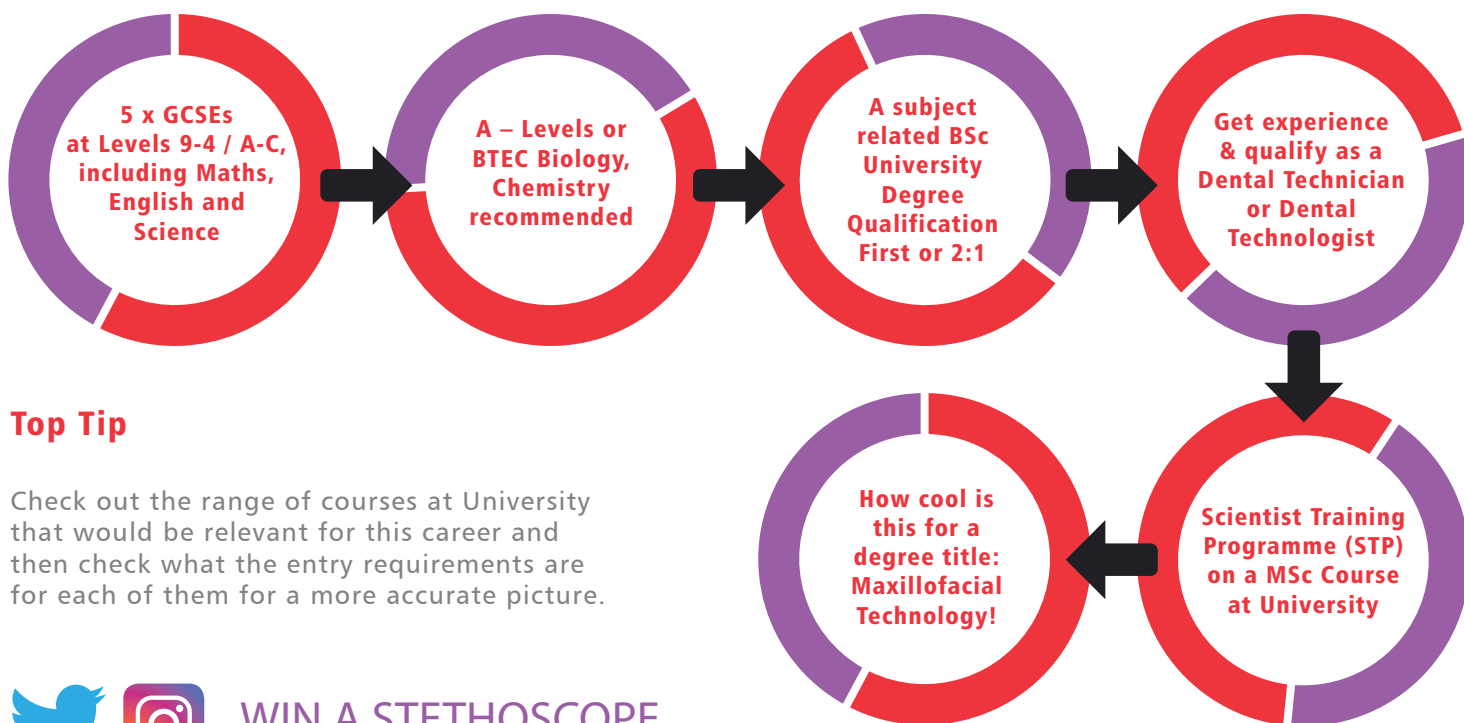
The 1st written account of an artificial limb was made around 500 B.C., Herodotus wrote of a prisoner who escaped from his chains by cutting off his foot, which he later replaced with a wooden substitute

A varied job that uses materials such as plastics, clay or wax to help mould and design custom made devices for patients. These could include splints, implantable skull plates made of titanium or even teeth! The patients you work with could have sustained injuries that result in a disability or disfigurement or they could have been born with malformations that need a custom made device.

Once the treatment has been carried out, these guys are part of the on going care of the patient to make sure the treatment is the best, most up-to-date for the individual patient.



What to do to get into this career...



Top Tip

Check out the range of courses at University that would be relevant for this career and then check what the entry requirements are for each of them for a more accurate picture.



WIN A STETHOSCOPE

Tweet, Vine or Tag us in a picture of you with this careers poster and win a stethoscope!

@MedicMavericks #scienceselfie



Check out **MedicalMavericksTV** on YouTube for loads of amazing videos on science and the body.

To find a Healthcare Science degree and the Uni's that teach them, visit the Student Zone on the Medical Mavericks website www.medicalmavericks.co.uk or scan this QR code to take you straight there.

