

# Healthcare Science Career of the Week



## Dental Nurse

Area of HCS: Dental Team

Pay Scale: £17k - £29k

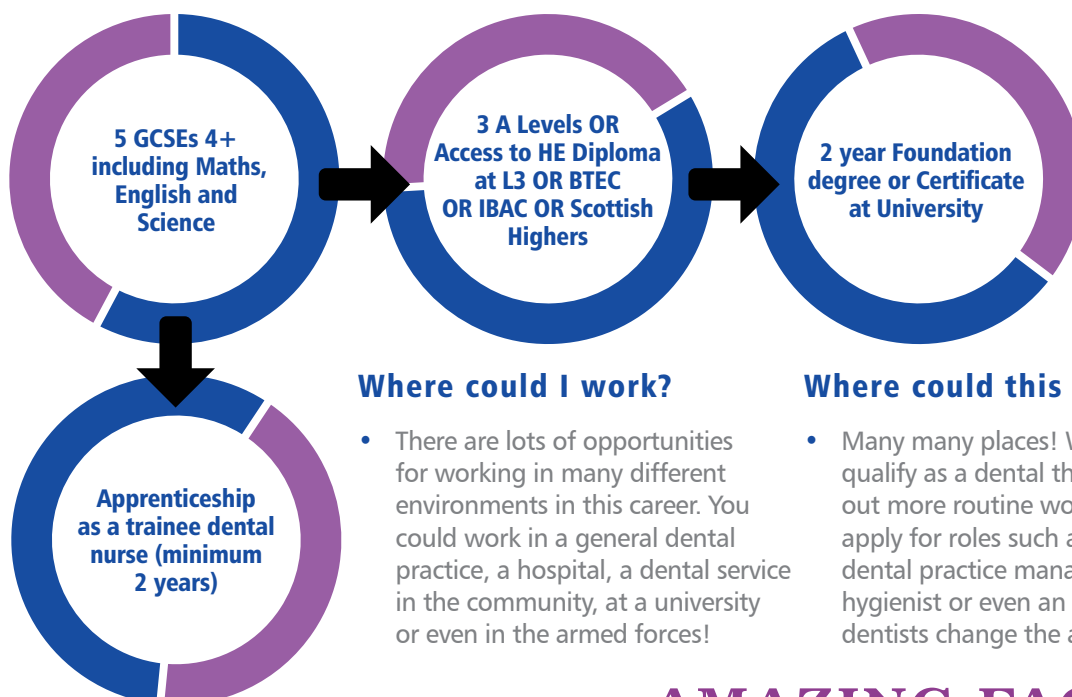
### AMAZING FACT

- Did you know that tooth enamel is the strongest substance in the human body, stronger than bone even! Healthy tooth enamel stops bacteria causing cavities and protects the nerves that are in your teeth. Although it is stronger than your bones, enamel contains no living cells so can't regenerate or repair like bone can, that is why it's super important to look after your teeth.

A dental nurse's role is to support the dentist and provide top quality dental care. These girls and gals can help anyone in the dental team provide treatment and care, but normally work hand-in-hand with the dentist. You'll assist at simply procedures like check-ups through to more complicated treatments. You will welcome and provide direct support to the patient through whatever treatment they require, tact and discretion are hugely important in this role, some procedures can be arduous and unpleasant for the patient! A calm, confident and reassuring manner is a massive bonus in this career.

Your responsibilities will include jobs such as decontaminating instruments, maintaining dental operating equipment, ensuring all relevant materials and supplies are in place, making fillings, looking after patient records and taking notes during procedures. With additional training you will have the opportunity to take X-rays, clinical photographs, impressions of teeth, models of teeth and apply fluoride varnish. This role can lead you to many different career paths! Take a look:

### What to do to get into this career...



#### Other roles to consider:

- Dental hygienist
- Dental therapist
- Dental technician

#### Where could I work?

- There are lots of opportunities for working in many different environments in this career. You could work in a general dental practice, a hospital, a dental service in the community, at a university or even in the armed forces!

#### Where could this career lead?

- Many many places! With additional training you could qualify as a dental therapist, helping the dentist carry out more routine work. With experience you could also apply for roles such as team manager, team leader or dental practice manager. You could also train as a dental hygienist or even an orthodontic therapist, helping dentists change the appearance of someone's teeth.

### AMAZING FACT 2:

- The modern toothbrush was not invented until the 1700s. William Addis attached boar's bristles to a bone handle, creating the first mass produced toothbrush! Brushes with nylon bristles (like we have today) didn't appear until the 1930s. Previously you would have to chew on tree bark to clean your teeth.



Tw: @MedicMavericks  
Inst: @medical\_mavericks  
FB: Medical Mavericks